

# 2018 Keith Millis Symposium on Ductile Cast Iron Template

**ABST HEAD..... ABSTRACT HEADING (10 PT ARIAL BOLD CAPS)**

Affiliation .....Place and City/State or Province/Country of Employment (10 pt Times)

Author .....Primary and secondary author names (12 pt Times)

Body .....General body of technical paper (10 pt Times)

**CONC HEAD ..... CONCLUSION HEAD (10 PT ARIAL BOLD CAPS)**

Equation.....All equations, as a graphic or text, in document (10 pt Times)

**Captions.....*Figure and Table captions (bold italics) (9 pt Arial Bold Italics)***

Greek Letters or Symbols. Must be applied using the Insert, Symbol menu with the Symbol font.

**HEADING1 ..... BOLD, ALL CAPS, ON OWN LINE (10 PT ARIAL BOLD CAPS)**

HEADING2 ..... NORMAL, ALL CAPS, ON OWN LINE (10 PT ARIAL)

Heading3 ..... Normal, Mixed Case, Underline, On Own Line (10 pt Arial)

Heading4 ..... Normal, Mixed Case, On Own Line (10 pt Arial)

*Italic.....Any italicized text*

1. Ord List.....Ordered List (numerical or alpha)

**REFER HEAD ..... REFERENCE HEAD (10 PT ARIAL BOLD CAPS)**

Ref .....Reference text (10 pt Times)

**Title..... Paper Title (14 pt Arial Bold)**

Underline .....Any underlined text (10 pt Times)

• Unord List .....Unordered List (bulleted) (10 pt Times)

## **REFERENCING A FIGURE OR TABLE WITHIN THE BODY OF THE PAPER:**

When a figure or table is mentioned within the body of the paper, it should be in **Bold** font. Note the following example.

### Analysis of Tensile Results

The tensile test results for Phase 1 are listed in **Table 1**. Percent elongation as a function of section thickness is shown in **Fig. 2**.

## **REFERENCE NUMBERS WITHIN THE BODY OF THE PAPER:**

References should be placed in brackets within the text where appropriate. Note the following example.

The microstructure that developed was similar to results reported in studies by Trudeau [2] and Simons [3].

# Title (Type Title of Paper Here)

J. Wood (author's initials & last name – do not add author's title)  
Ductile Iron Society, Strongsville, OH (author's affiliation & location)

W. Coyote (secondary author(s), same as above)  
ACME Company, Hollywood, CA

## **ABSTRACT (EX. OF ABST HEADING)**

The manuscript elements have been formatted for you through the “styles” capability of the software. To use the styles, select the text you wish to apply a style to, then, using the mouse, point to the style box on the toolbar. Click once on the downward pointing arrow to the right and select the appropriate style.

Please limit abstract to 250 words. Remember to leave a line of space between paragraphs rather than indenting.

## **INTRODUCTION (EX. OF HEADING1)**

The main sections of the text portion should be organized using styles named HEADING1. Do not indent paragraphs. Leave a line of space between paragraphs. Subheadings within a section should be all capital letters (HEADING2). Do not leave a line of space below this heading. Sub-subheadings should be typed in capital and lowercase letters (Heading3 & Heading4). Again, do not leave a line of space below this heading.

## **DESIGN OF EXPERIMENTS (EX. OF HEADING1)**

This is an example of a main heading section. This section could include sub-sections. It uses “body” text style and is identified with a HEADING1 style beginning the paragraph, as show here.

### **EXPERIMENTAL (EX. OF HEADING2)**

Here is a subsection (second level heading-HEADING 2). It uses “body” text style and is identified with a HEADING2 style beginning the paragraph, as show here.

### **EFFECT OF CHEMISTRY ON MECHANICAL PROPERTIES (EX. OF HEADING2)**

Here is another subsection (second level heading-HEADING2.) You may have several second-level headings and within each second level headings, you may have third level headings (Heading3). It uses “body” text style and is identified with a HEADING2 style beginning the paragraph, as show here.

#### Ultimate Strength (Ex. of Heading3)

Here is a sub-subsection (third level heading-Heading3). You may have several third level headings and within each third level heading, you may have fourth level headings (Heading4). It uses “body” text style and is identified with a Heading3 style beginning the paragraph, as show here.

#### Yield Stress (Ex. of Heading3)

##### Correlation (Ex. of Heading4)

Here is another sub-subsection (fourth level heading-Heading4.) You may have several fourth level headings. It uses “body” text style and is identified with a Heading4 style beginning the paragraph, as shown here.

#### Predicted Values (Ex. of Heading4)

Here is another example of Heading4, which would be a subsection of Yield Stress (Heading 3).

- This is an **unordered** list using bullets
- This is another list item
- This is another list item

1. This is an **ordered list**, using numbers
2. This is another list item.
3. This is a list ordered list item

## **ACKNOWLEDGMENTS (OPTIONAL)**

This is the Acknowledgment section. This is an optional section. It uses a HEADING1 style and Body style.

## **REFERENCES (REF HEAD)**

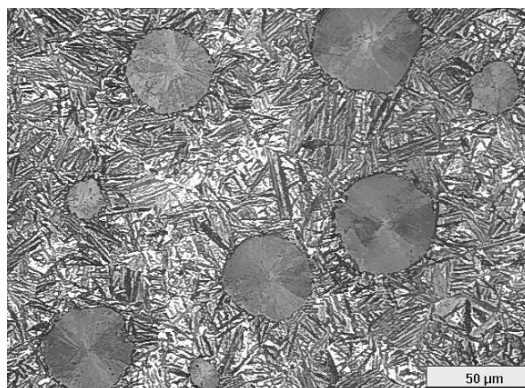
*(Please Note:* Remember to arrange references in numerical order in which they are referred to within the body of the text. Reference numbers should be placed in brackets [1]. Do not use superscripts. Do not use the bibliography function within Word to create a reference list. Examples of references are shown below.

1. Smith, A. and Jones, T., “Basics of Ductile Iron Production,” Ductile Iron News, Vol. 17, 1954, pp. 3 – 11.
2. Square, B., US Patent 5,555,555, “Title”, Issued: Date.
3. ASTM A897/897M Standard Specification for Austempered Ductile Iron, ASTM International, West Conshohocken, PA, [www.astm.org](http://www.astm.org).
4. Internal research ABC Company.
5. Ductile Iron Data for Design Engineers, Section IV, [www.ductile.org](http://www.ductile.org).

---

### **FIGURE EXAMPLE:**

*Each figure caption should appear below the figure. Figure captions should be complete sentences. The picture (JPEG) in the figure below was inserted by pulling down the Insert menu and choosing Picture. Do not place a list of figures at the end of your paper.*



**Fig. 1. A photomicrograph of GR 2 ADI is shown.**

**EXAMPLE OF TABLE CAPTION:**

*Each table caption should appear centered above the table.  
Table captions should be cap and lower case, with no period.*

**Table 1. This Table Was Created by Pulling down the Table Menu and Choosing Insert Table  
To make the gridlines show up, Gridlines has to be selected.**

<b>Sample ID</b>	<b>Length (mm)</b>	<b>Thickness (mm)</b>	<b>Weight (gm)</b>
ABC	4.2	2.4	200
DEF	5.0	2.6	425
GHI	9.2	2.8	800

Papers should be submitted as a Microsoft Word file to: <https://www.dropbox.com/request/EFmhpWKLbXMLSfKni65f>

**Please do NOT put a “Header” or “Footer” or page numbers on the manuscript pages.**